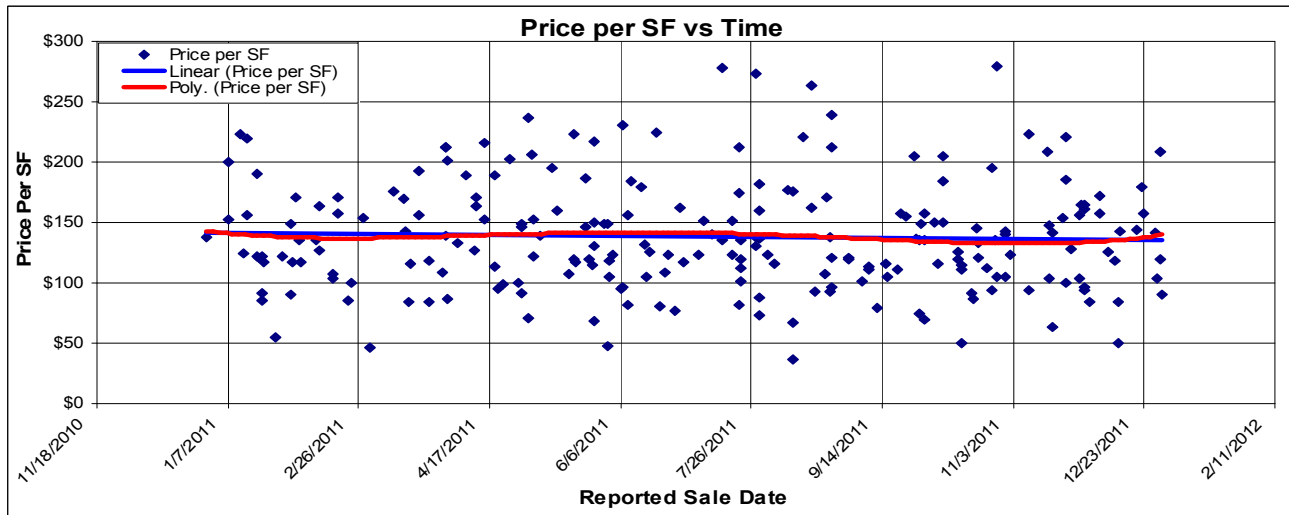
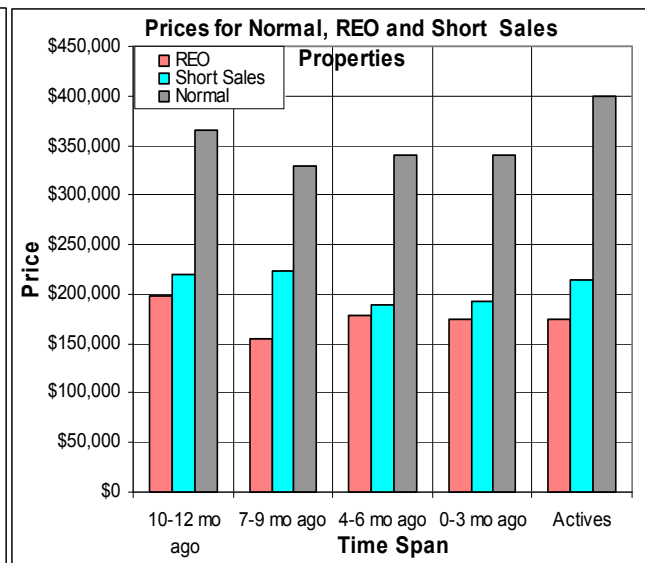
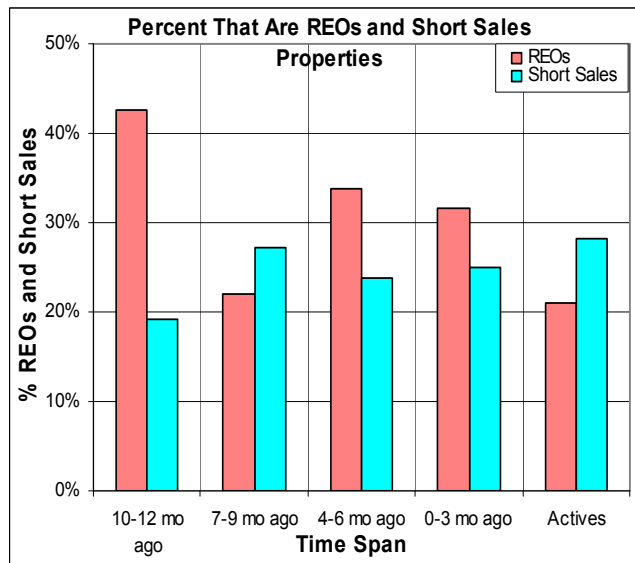


The Year 2011 in Southern Nevada County



Here we look at home sales in southern Nevada County from Highway 20 and below, using only MetroList data. This includes the short sales and REOs (foreclosed properties). In the graph above we see that the price per SF has decreased about 3% in the past year. Below we see that the percentage of REO sales (pink bars) and short sales (blue bars) has varied, and at below right we see the vast difference between normal sales and REO and Short Sales. 1/5/2012.



Don Machholz of Don's Appraisals
Your Professional Appraiser

List price appraisals to help set/reset price of house for about \$250

Other types of appraisals also available

(530) 320-8204 donthepappraiser@aol.com

www.donsappraisals.com

Go to my web site for past issues of these handouts

Lenders: To order an appraisal go to www.appraisalconnectioncenter.com