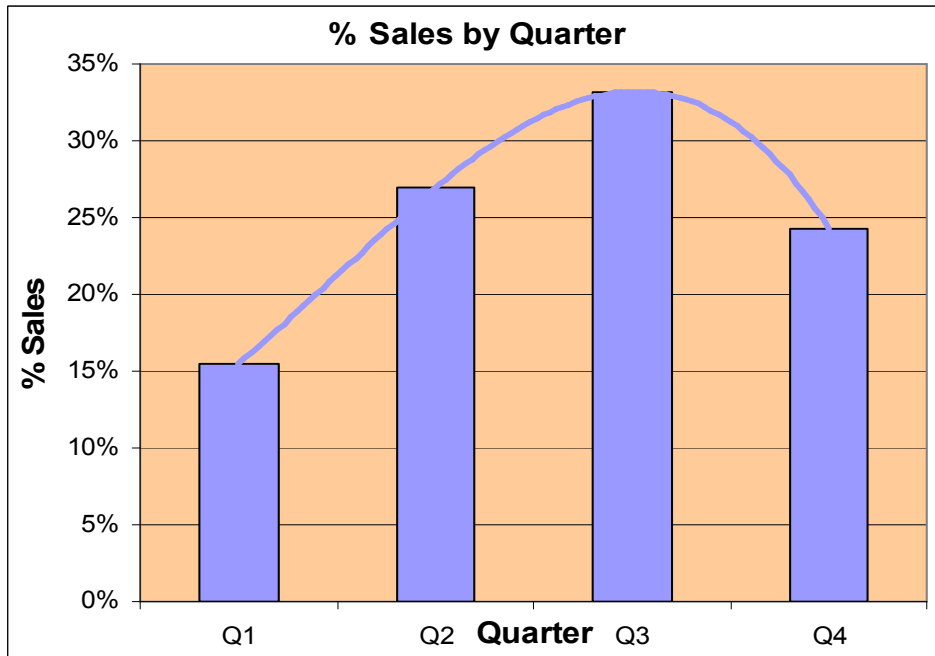
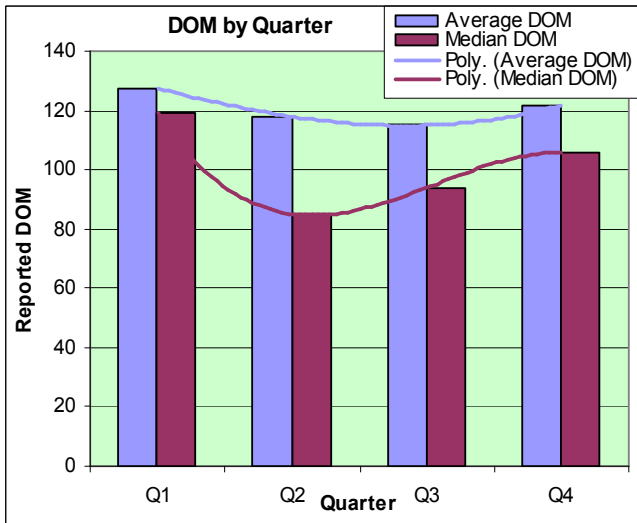
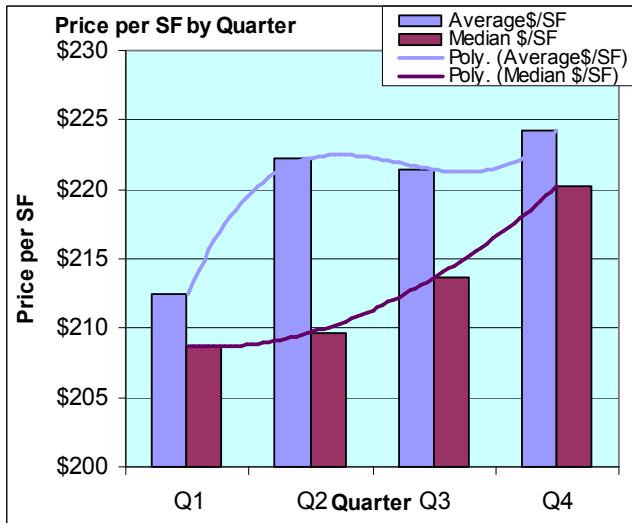


Seasonal Variations in Nevada City Sales



This time we look how sales vary over the year. This is for all homes sold since 1/1/2000, from 1000 to 3500 SF, built 1950 through 2000, and on lots of 0.15 to 5.0 acres. Over 1100 houses are represented here. The chart at left shows that the greatest number of homes sell in the third quarter, July-Sept., while the least sell from January through March (Q1).



The chart above shows that the highest price/SF is during the last quarter. The chart at above right shows DOM for each quarter, with those selling in the first quarter (Jan.-March) selling slowest. July 7, 2009



Don Machholz of Don's Appraisals

Your Professional Appraiser

Call (530) 320-8204 for graphs of other areas

List price appraisals to help set/reset price of house for about \$250

Other types of appraisals also available

www.donsappraisals.com

dontheppraiser@aol.com