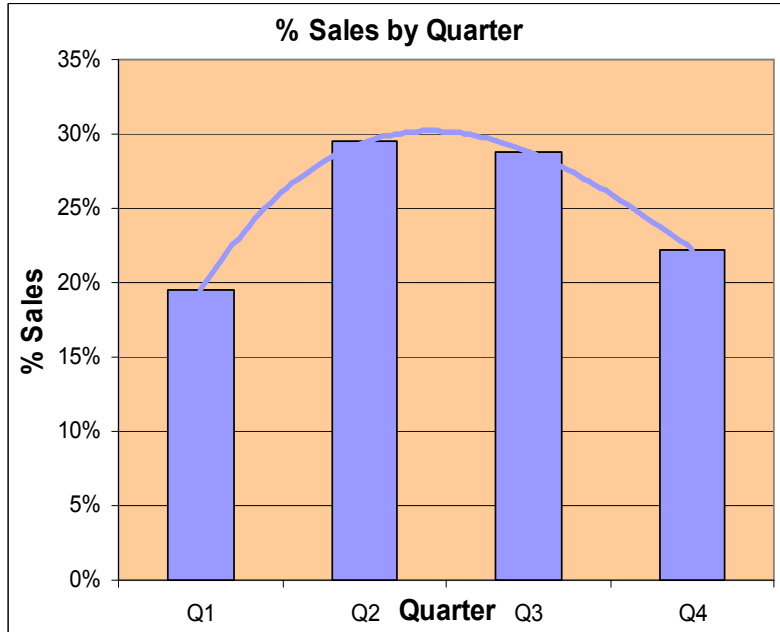


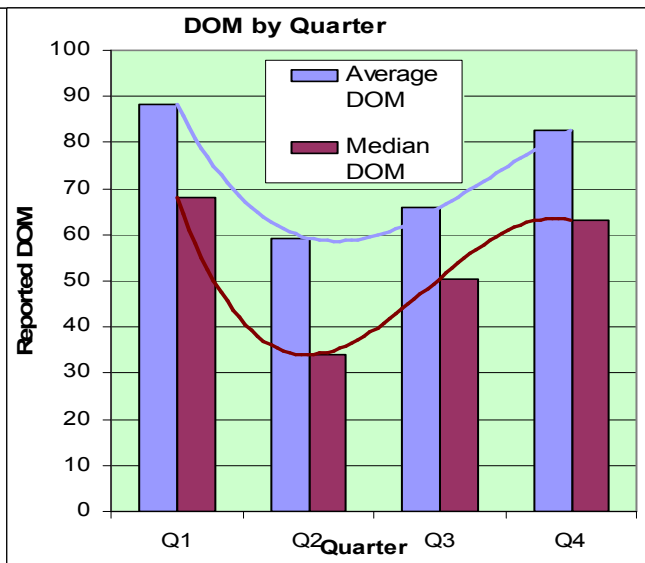
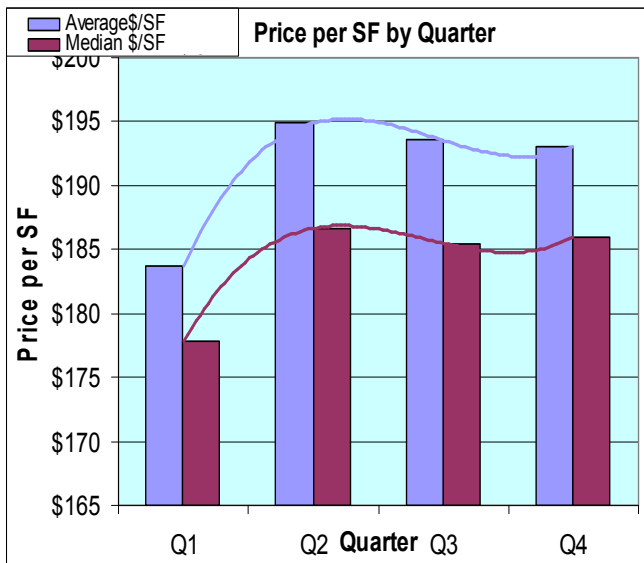
## Seasonal Variations in Alta Sierra Sales



This time we look how sales vary over the years in the Alta Sierra Subdivision. This is for all homes sold since 1/1/2000. Over 1100 houses are represented here. The chart at left shows that the greatest number of homes sell in the second quarter, April-June, while the least sell from January through March (Q1).

The chart below shows that the highest price/SF is during the second quarter. The other chart shows DOM for each quarter, with those selling in the first quarter (Jan.-March) selling slowest.

12/9/2009



**Don Machholz of Don's Appraisals**

**Your Professional Appraiser**

Call (530) 320-8204 for graphs of other areas

List price appraisals to help set/reset price of house for about \$250

Other types of appraisals also available

[www.donsappraisals.com](http://www.donsappraisals.com)

[donthepappraiser@aol.com](mailto:donthepappraiser@aol.com)

Go to my web site for past issues of these handouts